

- GB** The English version of the installation instruction and safety information can be found at the following location:
- DE** Die deutsche Version der Installationsanleitung und Sicherheitsinformationen finden Sie in folgendem Verzeichnis:
- FR** La version française des instructions d'installation et informations de sécurité est disponible à l'adresse suivante:
- IT** La versione italiana del manuale di installazione e sicurezza può essere reperita nella seguente sezione:
- ES** La versión española de las instrucciones de instalación y la información sobre seguridad puede encontrarse en la siguiente ubicación:
- PT** A versão em Português das instruções de instalação e das informações de segurança pode ser encontrada na seguinte localização:
- RO** Versiunea în limba română a instrucțiunilor de instalare și a informațiilor de siguranță pot fi găsite la:
- PL** Polską wersję instrukcji instalacji oraz informacje dotyczące bezpieczeństwa można znaleźć w następującej lokalizacji:
- CZ** Návod k montáži a bezpečnostní informace v češtině najdete zde:
- SK** Slovenskú verziu montážnej príručky a bezpečnostných inštrukcií nájdete na nasledujúcej lokalite:
- HR** Hrvatska verzija priručnika za ugradnju i sigurnosnih informacija nalazi se na sljedećoj lokaciji:
- RS** Verziju uputstva za instalaciju i informacija o bezbednosti na srpskom jeziku možete pronaći na sledećoj lokaciji:
- SI** Slovenska različica navodil za namestitve in varnostnih navodil se nahaja na naslednji strani:
- BA** Upute za instalaciju i sigurnosne informacije na engleskom jeziku možete naći na sljedećoj web lokaciji:
- MK** Англиската верзија на упатството за инсталирање и за безбедносните информации може да се најде на следната локација:
- HU** A telepítési útmutató és a biztonsági információk magyar nyelvű változata az alábbi címen található:
- NL** De Nederlandse versie van de installatie-instructies en veiligheidsinformatie kan op de volgende locatie worden gevonden:
- DK** Den danske version af installationsvejledningen og sikkerhedsoplysninger kan findes på følgende placering:
- FI** Asennusohjeiden ja turvallisuusettietojen suomenkielinen versio löytyy seuraavasta paikasta:
- NO** Den norske versjonen av installasjonsinstruksjonene og sikkerhetsinformasjonen finnes under:
- SE** Ni hittar den svenska versionen av installationsanvisningarna och säkerhetsinformationen på följande plats:
- EE** Eestikeelse paigaldusjuhendi ja ohutusnõuded leiata aadressilt:
- LV** Uztādīšanas instrukciju un drošības informāciju latviešu valodā var atrast šeit:
- LT** Lietuvišką diegimo instrukcijos ir saugos informacijos versiją galima rasti šioje vietoje:
- GR** Μπορείτε να βρείτε την ελληνική εκδοχή των οδηγιών εγκατάστασης και των πληροφοριών ασφάλειας στην εξής τοποθεσία:
- RU** Русскую версию инструкции по установке и технике безопасности можно найти здесь:
- UA** Українська версія інструкції зі встановлення та інформація щодо безпеки знаходяться за такою адресою:
- BG** Българската версия на инструкциите за инсталация и информация за безопасност могат да бъдат намерени на следния адрес:
- ARAB** يمكن إيجاد النسخة العربية من إرشادات التثبيت ومعلومات الأمان على الموقع التالي:
- TR** Montaj talimatı ve güvenlik bilgilerinin Türkçe sürümü, aşağıdaki konumda bulunabilir:
- IL** ניתן למצוא הגרסה העברית של פרטי ההתקנה ופרטי הבטיחות בכתובת דלהלן:

www.gelighting.com/installations



LED T8 Universal tubes

LED T8 PPU 2-5Ft 100-277V

LED T8 Universal tube is suitable to replace T8 fluorescent lamps in luminaires with standard G13 (medium bi-pin) lamp holders. This product is intended to be compatible with most types of magnetic ballasts (CCGs) and Electronic ballasts (ECGs), as direct retrofits for traditional fluorescent lamps without rewiring. If a ballast does not work properly (eg. causes flickering, noise or fails to operate), please refer to direct wiring/new luminaire section of the instructions.

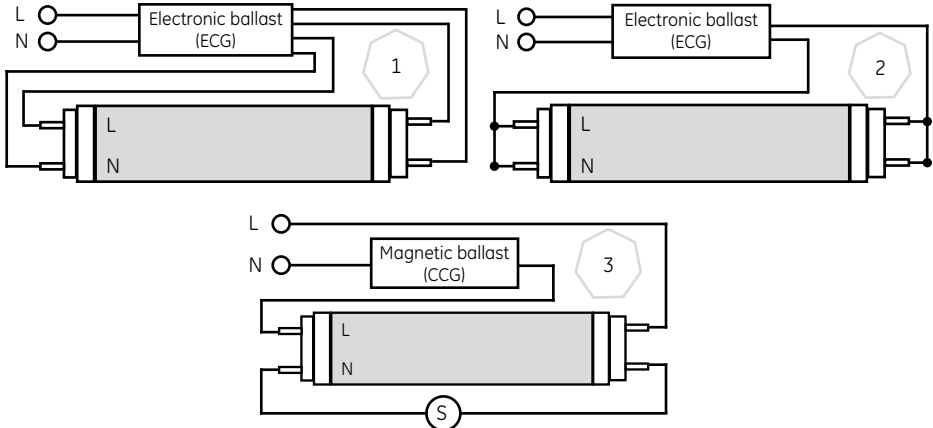


BEFORE YOU BEGIN

to install the LED T8 Universal tube, please read the entire installation guide carefully!

* Ensure that package includes: installation guide, warning label to be attached to luminaire, LED T8 tube and LED dummy starter.

* Identify which ballast type is installed in the fixture (see figures below) and follow the relevant section of the Installation instructions to replace the fluorescent tube with the LED T8 Universal tube. When direct wiring of the Luminaire is needed: The technical and safety requirements of the converted luminaire are the sole responsibility of the party doing the conversion and must comply with the local applicable safety and regulatory laws (i.e. LVD) and standards (i.e. IEC 60598). The provided Warning label should be placed onto the converted luminaire to indicate that the luminaire has been modified and can no longer be used with fluorescent lamps.



Warning: Risk of fire or electric shock. LED retrofit installation must be done by a qualified electrician and all safety instructions must be followed to avoid a risk of injury and property damage. Do not disassemble this product and replace any LED or other internal components. When the light source reaches its end of life the whole luminaire shall be replaced.

Warning: Risk of electric shock. Disconnect power before installation.

Don't switch on power until installation of lamps are completed.

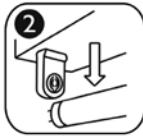
Warning: The luminaire should be positioned so that prolonged staring into the luminaire at a distance closer than 0.65 m can be prevented.

Installation instruction

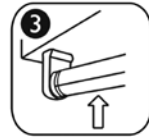
*Retrofit / Electronic ballast system



1. Turn off power



2. Remove the existing fluorescent lamp



3. Insert GE LED T8 Universal tube



4. Turn power back on and check for proper operation.

Note: In case of fixture supplied with electronic ballast, the green cap of the GE LED T8 Universal tube can face any of the two directions. If tube does not start up properly, then you can try to exchange direction or go to the direct wiring/new luminaire section of the instructions.

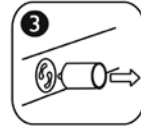
*Retrofit / Magnetic ballast system



1. Turn off power



2. Remove the existing fluorescent lamp



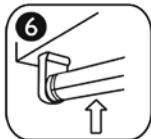
3. Remove the existing fluorescent starter



4. Insert LED T8 starter (provided extra by GE) into existing fluorescent starter location



5. Apply caution label provided in the package to warn users that the system has been modified and operates only LED lamps



6. Insert GE LED T8 Universal tube



7. Turn power on and check for proper operation

Note: Caution label with the following warning shall be placed onto the fixture in a location where readily visible by the user during re-lamping and after installation: "Caution: Risk of injury or damage: This luminaire has been modified and can no longer operate a fluorescent lamp. Only use the replacement GE LED T8 lamp type or contact manufacturer for more information."

*Direct wire / new luminaire

For applications where retrofit is not possible please follow the procedure below

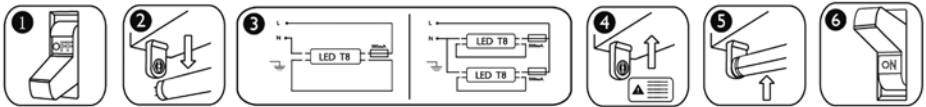
- 1) Ensure power is off by disconnecting the supply voltage from luminaire
- 2) Remove all fluorescent lamps and starters
- 3) Wire luminaire according to one of the below diagrams depending whether it is single or twin tube fixture (figure 3).

Note: LED T8 tube will not work with shunted lamp holders.

Note: Final compliance/inspection to local standards/regulations of the luminaire is the sole responsibility of the luminaire manufacturer or installer.

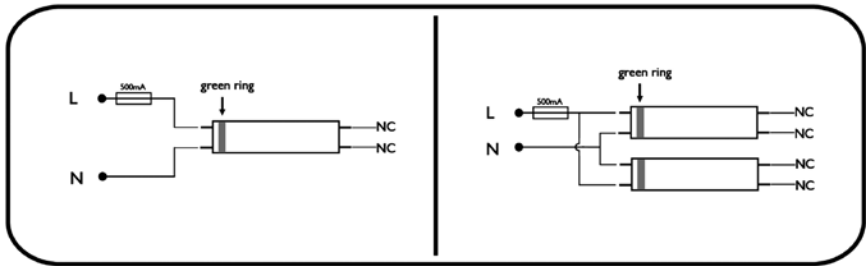
Note: The fuse should be rated for 250 V 500 mA. See electrical distributor for proper fuse.

- 4) Place warning label found in LED retrofit lamp package to ensure that the user understands that the system now uses LED tubes and replacement with fluorescent can cause damage.
- 5) Insert T8 LED lamp
- 6) Turn power back on and check for proper operation.



*Additional information

It is also possible to connect both line (L) and neutral (N) power to one lampholder (as per below diagram). In this case tube with the power side (marked with "AC Input and green ring around the cap) should be facing the lampholder with mains connection otherwise the internal fuse of the tube could be destroyed.



GE imagination at work

Please retain this Installation Guide for further reference
GE/CM Lighting disclaims liability for any damage caused
by not following the instructions in this Installation Guide.
LED T8 Installation Guide - March 2015 - 99000553