

LED T8 Tubes

LED 8/T8 VG 2ft/830/100-240V BX1/15
LED 8/T8 VGR 2ft/830/100-240V BX1/15
LED 8/T8 VG 2ft/840/100-240V BX1/15
LED 8/T8 VGR 2ft/840/100-240V BX1/15
LED 8/T8 VG 2ft/865/100-240V BX1/15
LED 8/T8 VGR 2ft/865/100-240V BX1/15
LED 10/T8 VG 2ft/830/100-240V BX1/15
LED 10/T8 VGR 2ft/830/100-240V BX1/15
LED 10/T8 VG 2ft/840/100-240V BX1/15
LED 10/T8 VGR 2ft/840/100-240V BX1/15
LED 10/T8 VG 2ft/865/100-240V BX1/15
LED 10/T8 VGR 2ft/865/100-240V BX1/15

LED 14.5/T8 VG 4ft/830/100-240V BX1/15
LED 14.5/T8 VGR 4ft/830/100-240V BX1/15
LED 14.5/T8 VG 4ft/840/100-240V BX1/15
LED 14.5/T8 VGR 4ft/840/100-240V BX1/15
LED 14.5/T8 VG 4ft/865/100-240V BX1/15
LED 14.5/T8 VGR 4ft/865/100-240V BX1/15
LED 18/T8 VG 4ft/830/100-240V BX1/15
LED 18/T8 VGR 4ft/830/100-240V BX1/15
LED 18/T8 VG 4ft/840/100-240V BX1/15
LED 18/T8 VGR 4ft/840/100-240V BX1/15
LED 18/T8 VG 4ft/865/100-240V BX1/15
LED 18/T8 VGR 4ft/865/100-240V BX1/15

LED 18/T8 VG 5ft/830/100-240V BX1/10
LED 18/T8 VG 5ft/840/100-240V BX1/10
LED 18/T8 VG 5ft/865/100-240V BX1/10
LED 27/T8 VG 5ft/830/100-240V BX1/10
LED 27/T8 VGR 5ft/830/100-240V BX1/10
LED 27/T8 VG 5ft/840/100-240V BX1/10
LED 27/T8 VGR 5ft/840/100-240V BX1/10
LED 27/T8 VG 5ft/865/100-240V BX1/10
LED 27/T8 VGR 5ft/865/100-240V BX1/10

Above listed LED T8 Tubes are suitable to replace T8 fluorescent lamps in luminaires containing standard non-shunted G13 (medium bi-pin) lamp holders and magnetic ballasts (conventional control gears). For use on electronic control gear please refer to direct wiring/new luminaire section of the instructions.



BEFORE YOU BEGIN

to install the LED T8 tube, please read the entire installation guide carefully.

Ensure that package includes: installation guide, warning label to be attached to luminaire, LED T8 tube and LED dummy starter.

Product is not intended to be used with dimmers and emergency light luminaires. This LED T8 tube is not suitable for direct replacement of linear fluorescent lamp in luminaires where two lamps are connected in series with one conventional control gear. When direct wiring of the luminaire is needed: The technical and safety requirements of the converted luminaire are the sole responsibility of the party doing the conversion and shall comply with the local applicable safety and regulatory laws (i.e. LVD) and standards (i.e. IEC 60598). The provided Warning label should be placed onto the converted luminaire to indicate that the luminaire has been modified and can no longer be used with fluorescent lamps.



WARNING Risk of fire or electric shock. LED Retrofit installation must be done by a qualified electrician only and all safety instructions must be followed to avoid a risk of injury or property damage.

Do not disassemble this product and replace any LED or other internal components. When the light source reaches its end of life the whole tube shall be replaced.

WARNING Risk of Electric Shock. Disconnect power before installation of the product.

Note: Caution label with the following warning shall be placed onto the fixture in a location where readily visible by the user during re-lamping and after installation. "Caution Risk of Injury or Damage: This luminaire has been modified and can no longer operate a fluorescent lamp. Only use the replacement LED T8 lamp type or contact manufacturer for more information."

Retrofit / Magnetic Ballast System

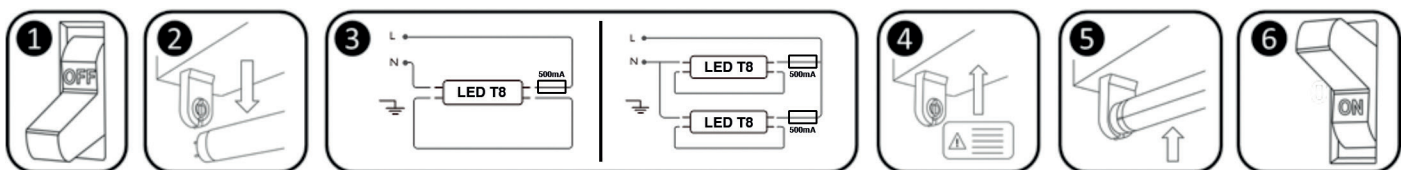
- 1) Turn power off by disconnecting the supply voltage
- 2) Remove current fluorescent lamps and dispose of them properly based on local regulations
- 3) Find and remove existing fluorescent starter
- 4) Insert LED T8 starter provided into existing fluorescent starter location
- 5) Installer should apply caution label provided to luminaire to state that luminaire has been modified and operates only LED lamps.
- 6) Check fluorescent socket for damage. If damaged replace with one of the exact configuration and rating. Insert T8 LED lamp
- 7) Turn power back on and check for proper operation



Direct wire / New luminaire

For applications where use on EM ballasts is not possible please follow the procedure below

- 1) Ensure power is off to luminaire by disconnecting the supply voltage
- 2) Remove all fluorescent lamps and starters
- 3) Wire luminaire to the configuration shown on drawing 3. Note: LED T8 tube will not work with shunted lamp holders. Note: Final compliance/inspection to local standards/regulations of the luminaire is the responsibility of the luminaire manufacture or installer. Note: The fuse is rated for 250 V 500 mA. See electrical distributor for proper fuse.
- 4) Place warning label found in LED retrofit lamp package to ensure that the user understands that the system now uses LED tubes and replacement with fluorescent can cause damage.
- 5) Insert T8 LED lamp
- 6) Turn power back on and check for proper operation.



This lamp is designed for general lighting service (excluding for example explosive atmospheres).

This lamp may not be suitable for use in all applications where a traditional fluorescent lamp has been used. The temperature range of this lamp is more restricted. In cases of doubt regarding the suitability of the application the manufacturer of this lamp should be consulted.



GE imagination at work



Lamp to be used
in dry conditions.

Please retain this Installation Guide for further reference
GE Lighting disclaims liability for any damage caused by not
following the instructions in this Installation Guide.
LEAFLET LED T8 GLASS - December 2015 - 99001188

- GB** The English version of the installation instruction and safety information can be found at the following location:
- DE** Die deutsche Version der Installationsanleitung und Sicherheitsinformationen finden Sie in folgendem Verzeichnis:
- FR** La version française des instructions d'installation et informations de sécurité est disponible à l'adresse suivante:
- IT** La versione italiana del manuale di installazione e sicurezza può essere reperita nella seguente sezione:
- ES** La versión española de las instrucciones de instalación y la información sobre seguridad puede encontrarse en la siguiente ubicación:
- PT** A versão em Português das instruções de instalação e das informações de segurança pode ser encontrada na seguinte localização:
- RO** Versiunea în limba română a instrucțiunilor de instalare și a informațiilor de siguranță pot fi găsite la:
- PL** Polską wersję instrukcji instalacji oraz informacje dotyczące bezpieczeństwa można znaleźć w następującej lokalizacji:
- CZ** Návod k montáži a bezpečnostní informace v češtině najdete zde:
- SK** Slovenskú verziu montážnej príručky a bezpečnostných inštrukcií nájdete na nasledujúcej lokalite:
- HR** Hrvatska verzija priručnika za ugradnju i sigurnosnih informacija nalazi se na sljedećoj lokaciji:
- RS** Verziju uputstva za instalaciju i informacija o bezbednosti na srpskom jeziku možete pronaći na sledećoj lokaciji:
- SI** Slovenska različica navodil za namestitev in varnostnih navodil se nahaja na naslednji strani:
- BA** Upute za instalaciju i sigurnosne informacije na engleskom jeziku možete naći na sljedećoj web lokaciji:
- MK** Англиската верзија на упатството за инсталирање и за безбедносните информации може да се најде на следната локација:
- HU** A telepítési útmutató és a biztonságai információk magyar nyelvű változata az alábbi címen található:
- NL** De Nederlandse versie van de installatie-instructies en veiligheidsinformatie kan op de volgende locatie worden gevonden:
- DK** Den danske version af installationsvejledningen og sikkerhedsoplysninger kan findes på følgende placering:
- FI** Asennusohjeiden ja turvallisuuustietojen suomenkielinen versio löytyy seuraavasta paikasta:
- NO** Den norske versjonen av installasjonsinstruksjonene og sikkerhetsinformasjonen finnes under:
- SE** Ni hittar den svenska versionen av installationsanvisningarna och säkerhetsinformationen på följande plats:
- EE** Eestikeelse paigaldusjuhendi ja ohutusnõuded leiate aadressilt:
- LV** Uzstādīšanas instrukciju un drošības informāciju latviešu valodā var atrast šeit:
- LT** Lietuvišką diegimo instrukcijos ir saugos informacijos versiją galima rasti šioje vietoje:
- GR** Μπορείτε να βρείτε την ελληνική εκδοχή των οδηγιών εγκατάστασης και των πληροφοριών ασφάλειας στην εξής τοποθεσία:
- RU** Русскую версию инструкции по установке и технике безопасности можно найти здесь:
- UA** Українська версія інструкції зі встановлення та інформація щодо безпеки знаходяться за такою адресою:
- BG** Българската версия на инструкциите за инсталация и информация за безопасност могат да бъдат намерени на следния адрес:
- ARAB** يمكن إيجاد النسخة العربية من إرشادات التثبيت ومعلومات الأمان على الموقع التالي:
- TR** Montaj talimatı ve güvenlik bilgilerinin Türkçe sürümü, aşağıdaki konumda bulunabilir:
- IL** ניתן למצוא הגרסה העברית של פרטי ההתקנה ופרטי הבטיחות בכתובת דלהלן:

www.gelighting.com/installations



www.gelighting.com



and General Electric are both registered trademarks of the General Electric Company

EMEA:

GE Hungary Kft.
Váci út 77.
H-1044 Budapest
Hungary

Information provided is subject to change without notice. Please verify all details with GE. All values are design or typical values when measured under laboratory conditions, and GE makes no warranty or guarantee, express or implied, that such performance will be obtained under end-use conditions.

ID nr: GE2022-7746_version1 12/2015