

# SYRA



SYRA-150: OXIDON GREY IP66 IP44 IK10/08 7-10 KG ⊕ CE

SYRA-250: OXIDON GREY IP66 IP44 IK10/08 8-12 KG ⊕ CE

## Product information

Syra is a range of luminaires for outdoor decorative lighting available in two sizes (up to 150W and 250W respectively).

**Application:** for urban lighting thanks to the attractive design it can be used for all road lighting in city beautification, pedestrian areas and boardwalk.

## Structures and materials

**Housing:** in one piece spun aluminum. A die cast aluminum piece in the top of the housing is used for the support of the electrical unit and the mounting device. A hinged door allows access to the optical assembly and the electrical unit without tools.

**Standard colour:** oxidon grey.

## Electrical and gear compartment

**Control gear:** mounted on an easily removable universal tray, with a terminal block for wires up to 4mm<sup>2</sup>. Isolated from the environment with a protection degree IP44.

**Compatibility:** works with HPS and Metal Halide lamps up to 150W for the small version and 250W for the large one. Also Mercury Vapor lamps up to 125W.

## Optics

Optical assembly hermetically sealed providing IP66. Easy removal. Comprising:

**Reflector:** high purity (99,85%) one piece formed aluminum reflector, anodized and sealed. Asymmetric distribution with minimum light emission towards the upper hemisphere.

**Lens:** spherical, elliptical or drop lens. Clear or stippled polycarbonate. Optionally tempered flat glass resistant to thermal and mechanical shock.

**Lampholder:** E40 ceramic lamp-holder. Multi-position support allowing lamp adjustment in longitudinal and vertical directions for optimal light distribution.

## Maintenance

Lampholder without tools, quick, easy and safe.

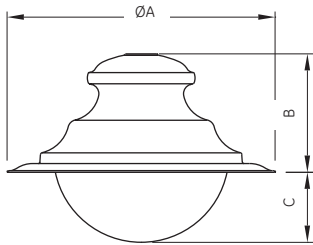
## Accessories/options

Optional Class II electronic gear

- Electronic version up to 150W
- Bi-level magnetic ballast



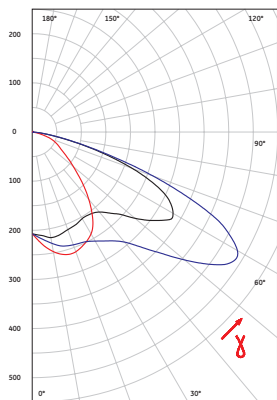
## Dimensions [mm]



(mm)	A	B	C
		SM/SC	VT
SYRA-150	722	319	189
SYRA-250	762	372	186

## Photometric data

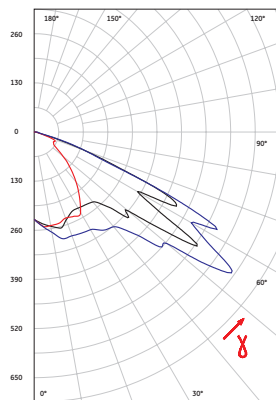
SYRA/EM/VHPS150  
LAMPHOLDER POSITION 2A



Intensity in the vertical plane,  
in candela per 1000 lumens

LONGITUDINAL ———  
TRANSVERSAL ———  
PRINCIPAL ———

SYRA/VC/VHPS250  
LAMPHOLDER POSITION 0A

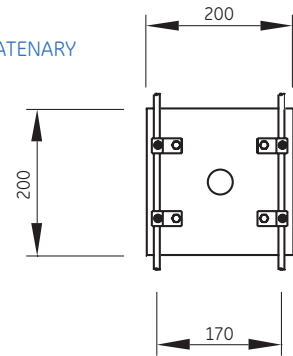
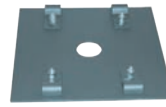


Intensity in the vertical plane,  
in candela per 1000 lumens

LONGITUDINAL ———  
TRANSVERSAL ———  
PRINCIPAL ———

## Accessory

CT – MOUNTING PLATE FOR CATENARY



## Accessory

Description	Product code
ACOP CT IBERIA/SYRA	87971

## Specifications

Dimensions for VT [mm]	SYRA-150: 722x319 (diameter x height) SYRA-250: 762x372 (diameter x height)
Weight [kg]	SYRA-150: 7-10 kg SYRA-250: 8-12 kg
Ballast	SYRA-150: HPS and MH up to 150W, MV up to 125W, 230V, 50Hz SYRA-250: HPS and MH up to 250W, MV up to 125W, 230V, 50Hz
Reflector	Asymmetric
Protection Degree	IP66 optical assembly IP44 gear compartment
Class	Class I. Class II optional
Upper hemisphere flux [%]	0.00
Windage load [m <sup>2</sup> ]	SYRA-150: 0.40 SYRA-250: 0.46
Operating Temperature [°C]	25°C. Contact us for higher temperatures
Regulations	CEI 34.21/EN60598 -1, IEC 60

## SYRA-150

Options: RC – Bi power system  
C2 – Class II  
EB – Electronic ballast

Description	Lamp	Product code
SYRA-150 SC HPS 70W	LU 70/90/MO/T/E27	519842
SYRA-150 VT HPS 70W	LU 70/90/MO/T/E27	519850
SYRA-150 SC HPS 100W	LU100/100/XO/T/40	519843
SYRA-150 VT HPS 100W	LU100/100/XO/T/40	519851
SYRA-150 SC HPS 150W	LU150/100/40	519844
SYRA-150 SC CMH 150 T U	CMH150/T/UVC/830/E40	519845
SYRA-150 VT HPS 150W	LU150/100/40	519852
SYRA-150 VT CMH 150 T U	CMH150/T/UVC/830/E40	519853

Lens: SC – spherical clear  
VT – tempered flat glass

Luminaire supplied without lamp

## SYRA-250

Options: RC – Bi power system  
C2 – Class II  
EB – Electronic ballast

Description	Lamp	Product code
SYRA-250 SC HPS 250W	LU250/T/40	519856
SYRA-250 SC CMH 250 T U	CMH250/TT/UVC/U/830/E40	519857
SYRA-250 VT HPS 250W	LU250/T/40	519858
SYRA-250 VT CMH 250 T U	CMH250/TT/UVC/U/830/E40	519859

Lens: VT – tempered flat glass  
SC – spherical clear

Luminaire supplied without lamp